

SCHOOL UNIFORM

Boys

ACCEPTABLE

Kippah must be worn at all times in the building

Smartly groomed hair

House tie worn to waist length and fastened appropriately at the neck

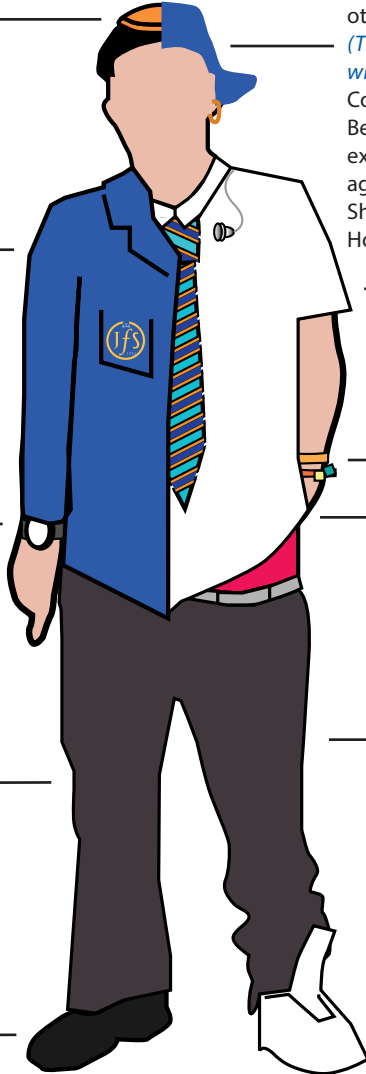
Wrist watch

Shirt fully tucked in

Plain black belt at waist if needed

Black trousers, classic plain style worn at the waist

Plain black socks
Black, flat leather shoes



UNACCEPTABLE

'Extreme' haircuts, beaded or otherwise decorated hairstyles
(The school is the arbiter as to what is considered extreme)

Coloured/dipped dyed hair

Beards - other than in exceptional circumstances agreed by the school

Shaved eyebrows

Hoops or multiple earrings

— Earphones

Top shirt button undone

Shirt Out

— Jewellery/'Smart' watch

Visible underwear

Pants worn below the waist

Belt with design buckle

Facial or body piercing
Tattooing

— Baggy or slim fit trousers

No logos other than the JFS logo

No hoodies

Boots, ankle boots

Trainers

Converse style shoes

Students must wear full school uniform when travelling to school, whilst at school, when travelling home from school, when on school outings, at school activities (e.g. plays or concerts) and at Parents' Evenings.